

# VIVIENDAS Y LOCALES EN LA HAYA.

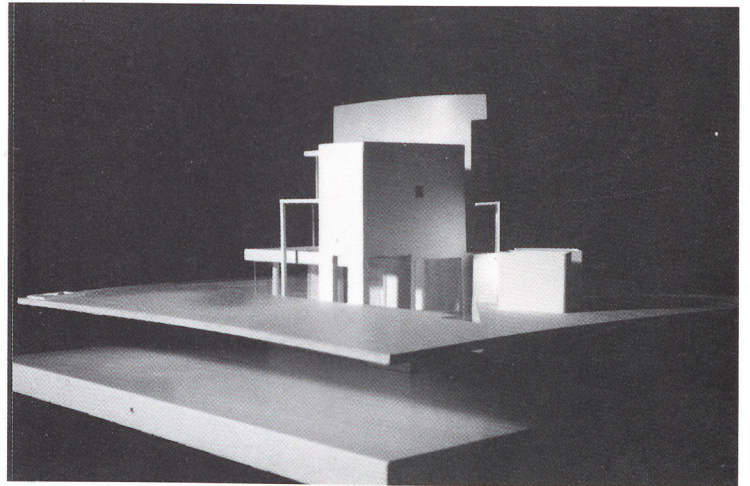
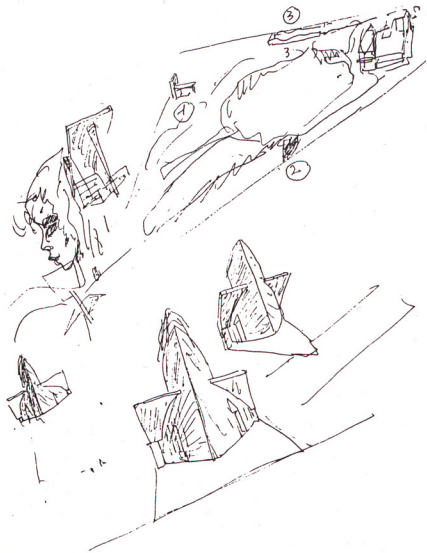
1985-1988

ALVARO SIZA

Colaboradores: Carlos Castanheira, Architektengroep Mecanoo

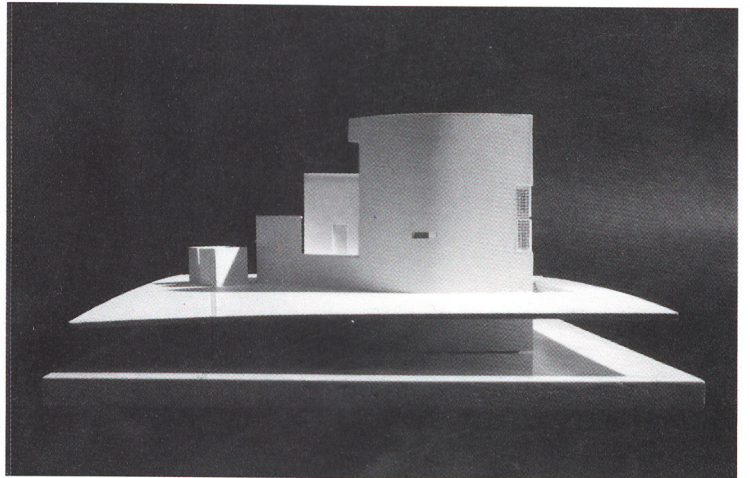
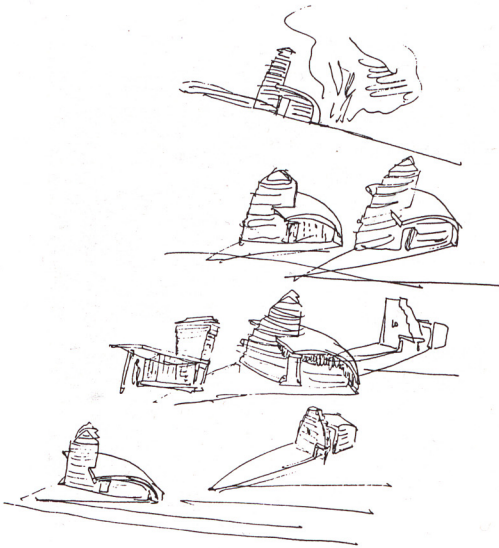
Fotografía: Atelier 18

158

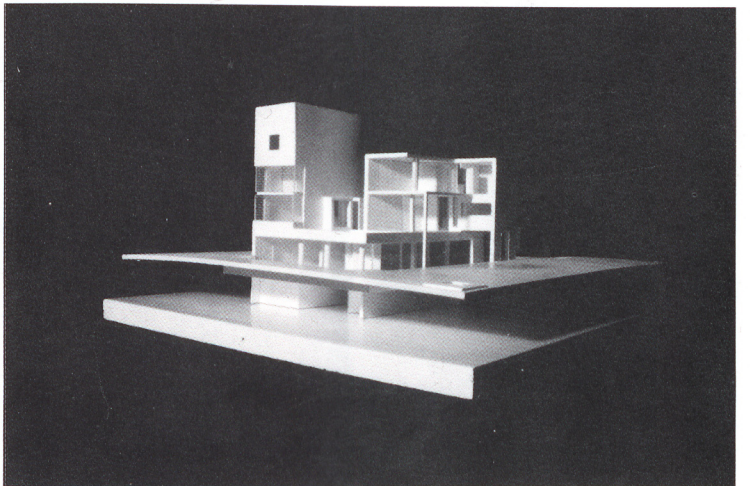


Fotos maqueta: José Rodrigues

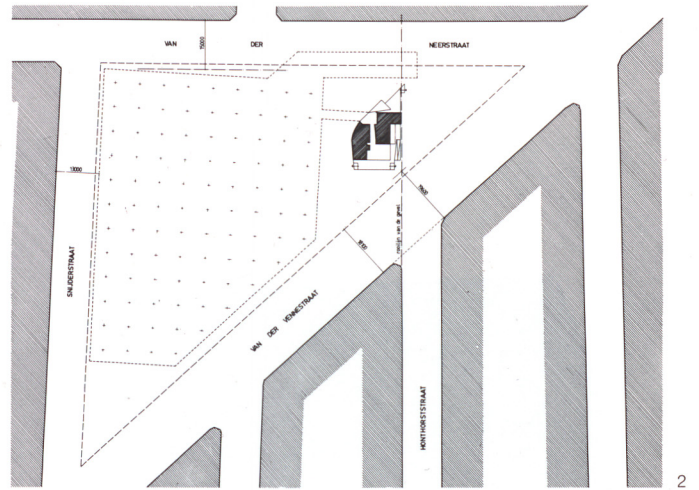
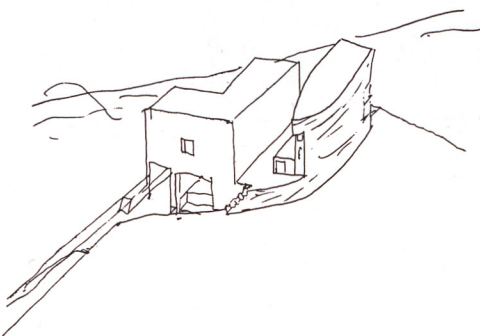
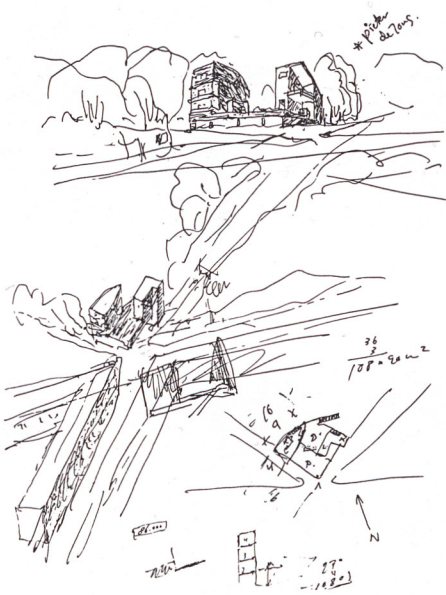
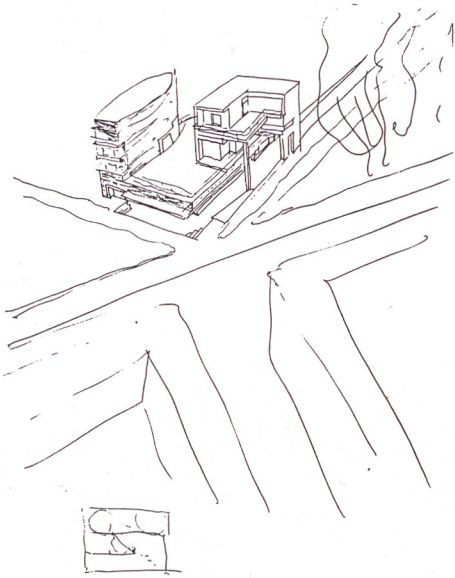
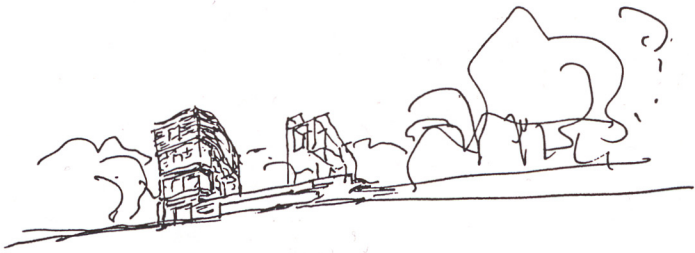
1



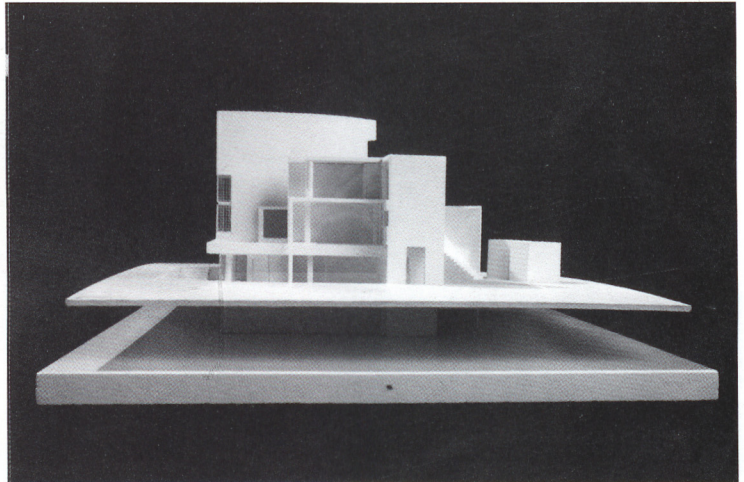
1



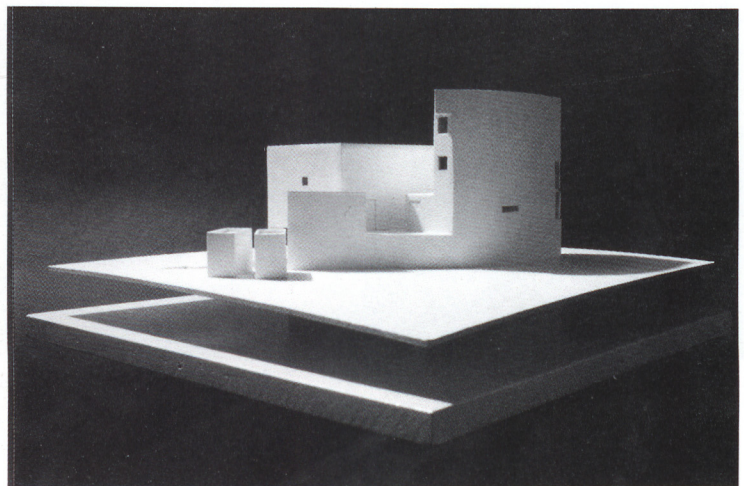
1



1. Vistas de la Maqueta.  
2. Plano de situación.



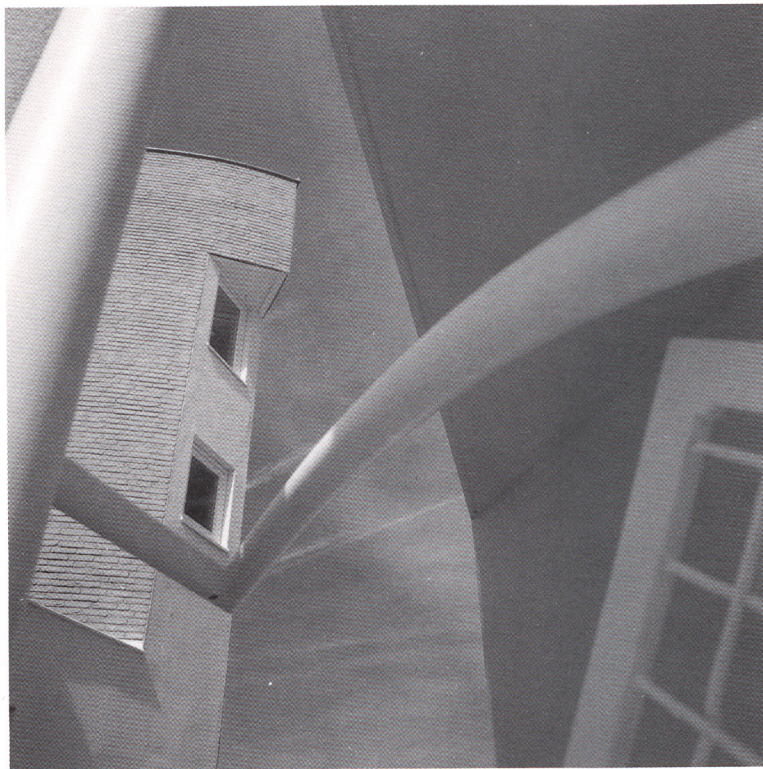
1



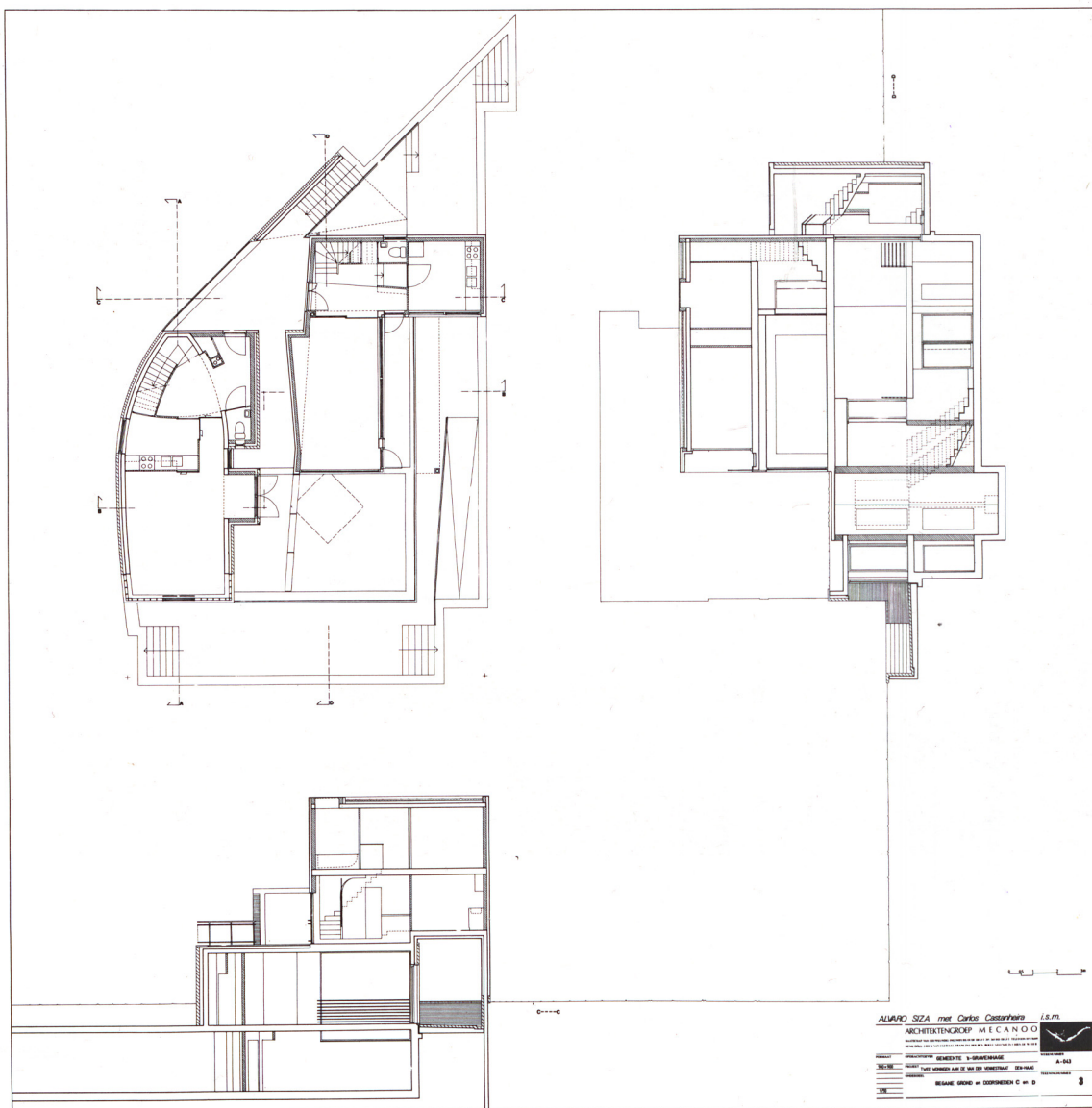
1



3. Vista desde el SE.
4. Detalle exterior.
5. Planta baja. Secciones.

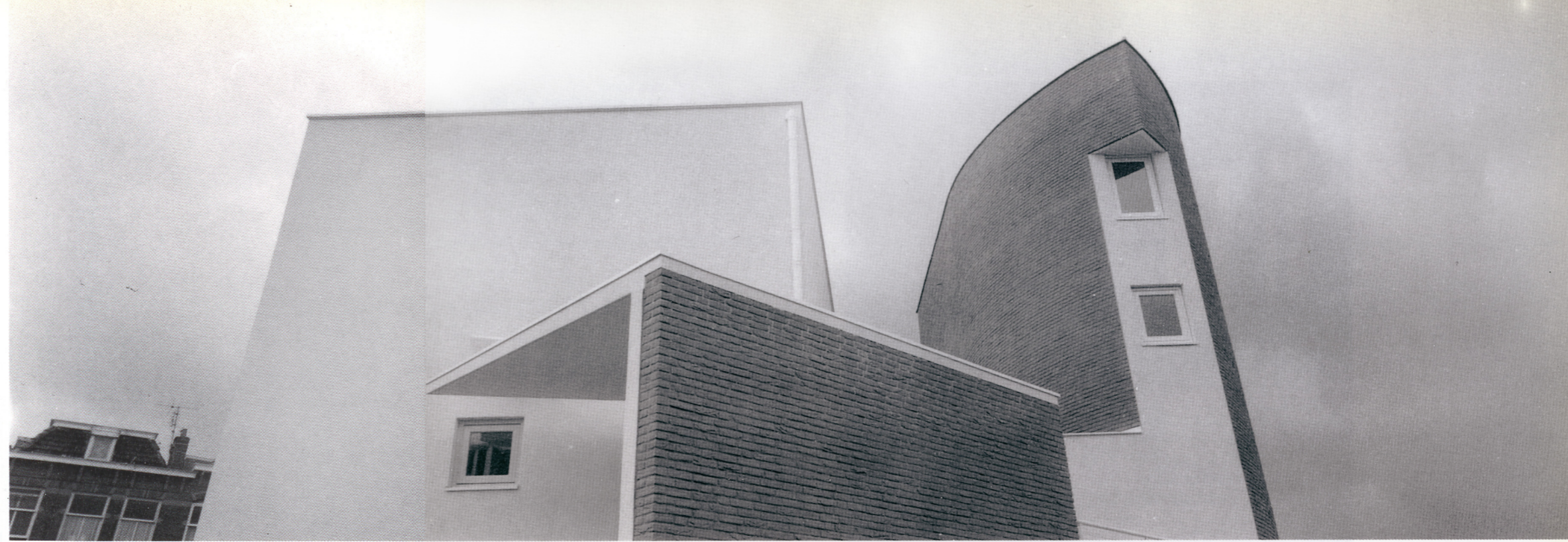


4

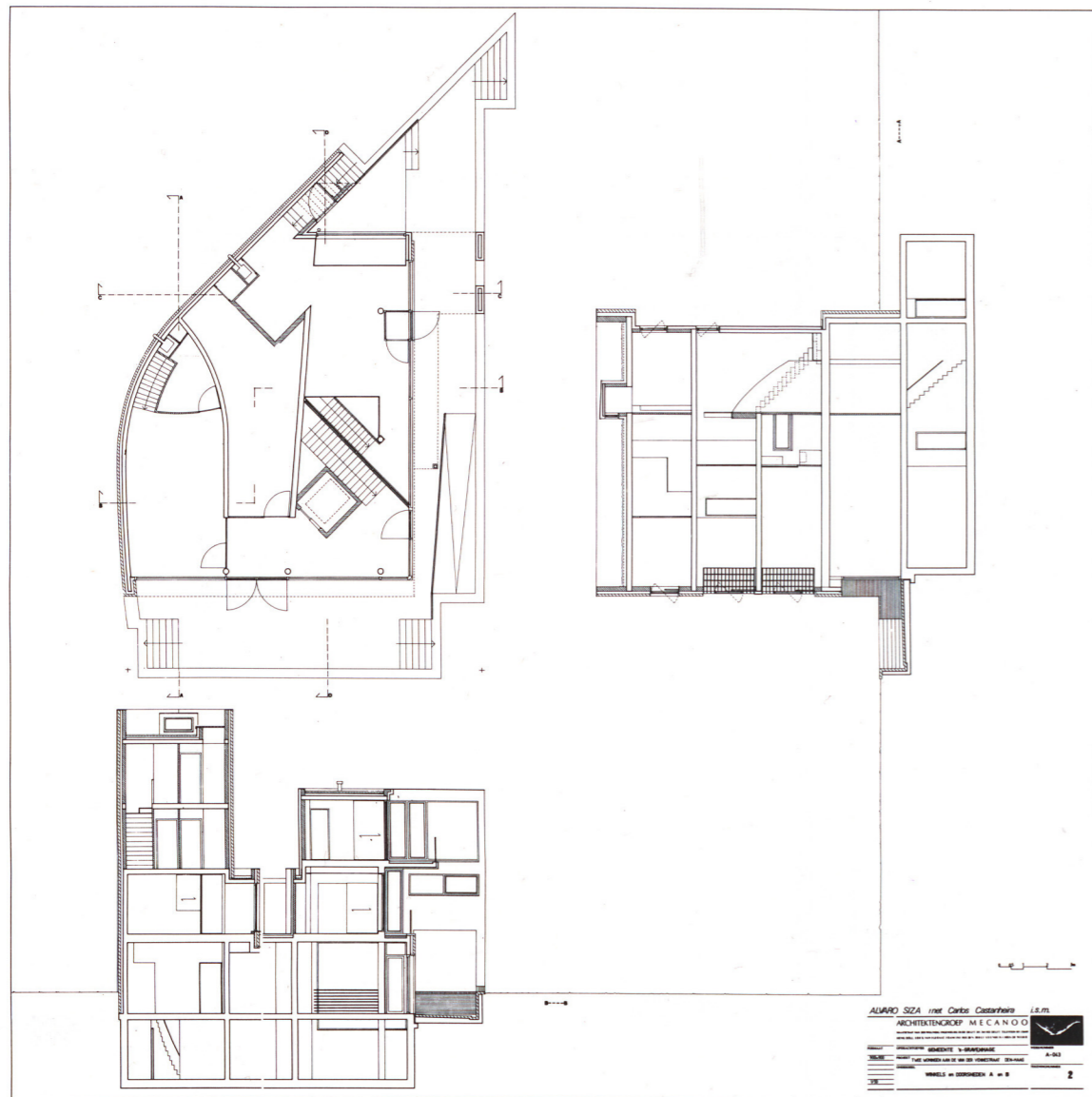


5

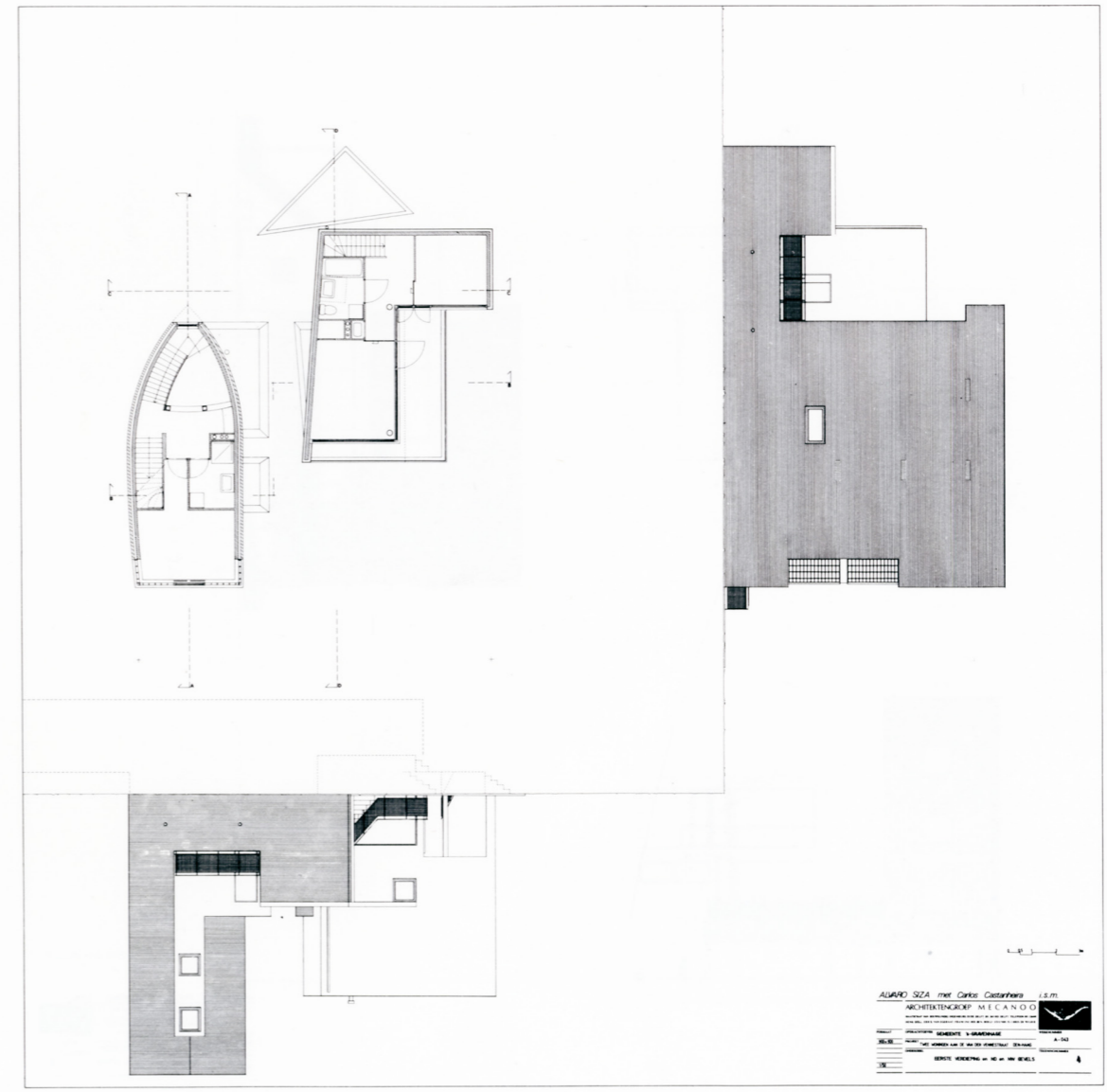
- 6. Detalle de la fachada NE.
- 7. Planta primera. Secciones.
- 8. Planta segunda. Alzados NO, NE.



6



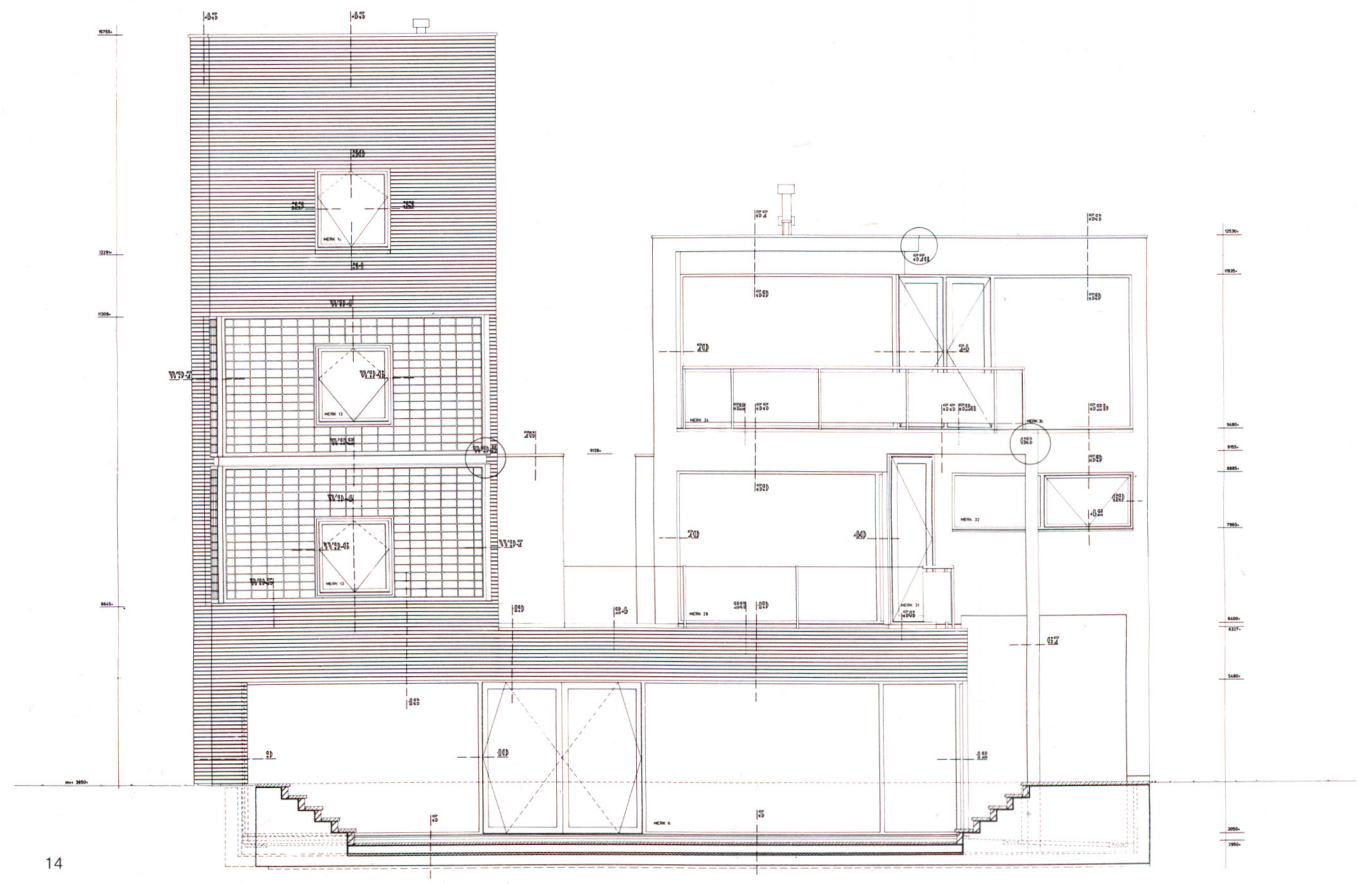
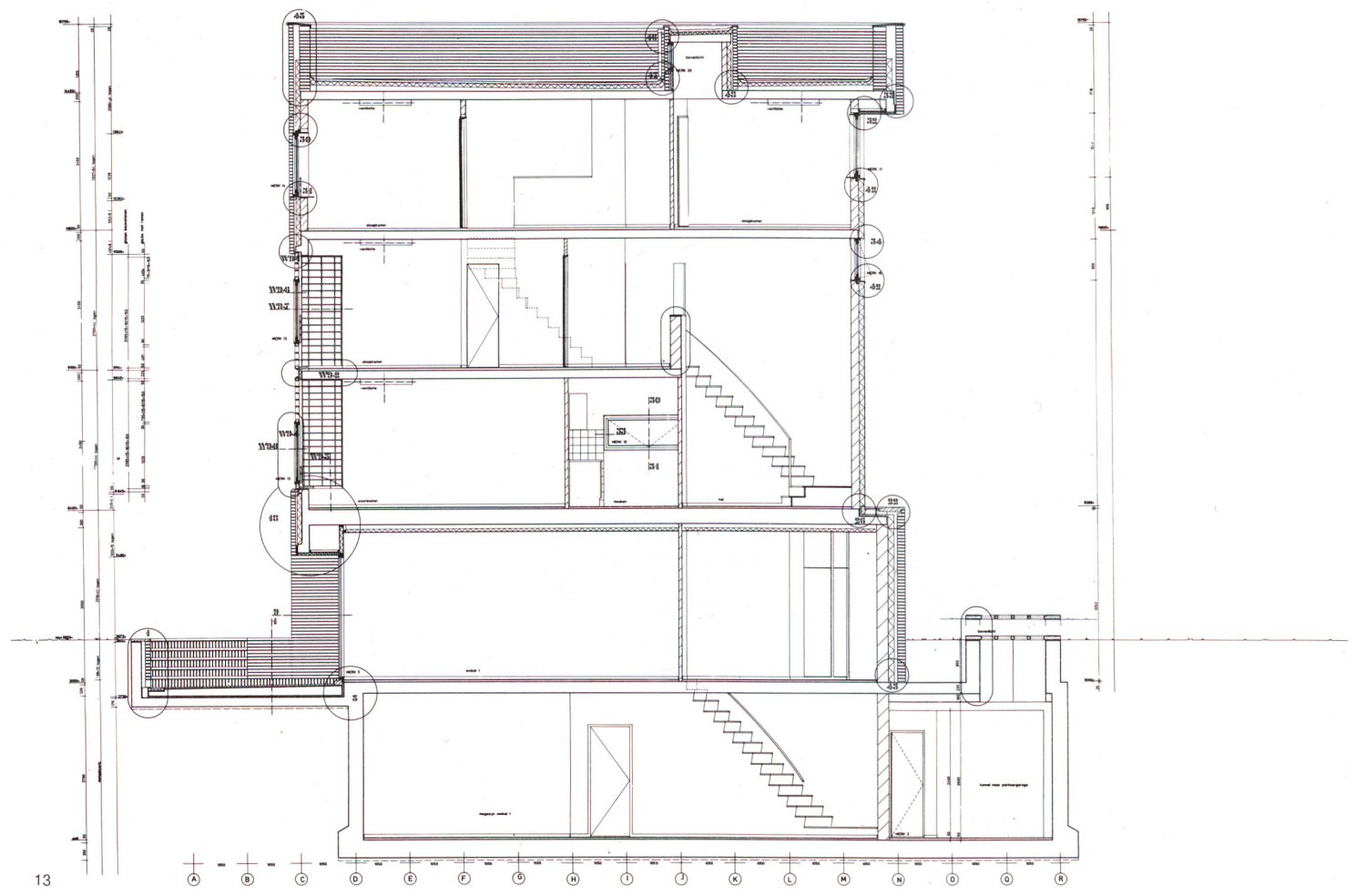
7



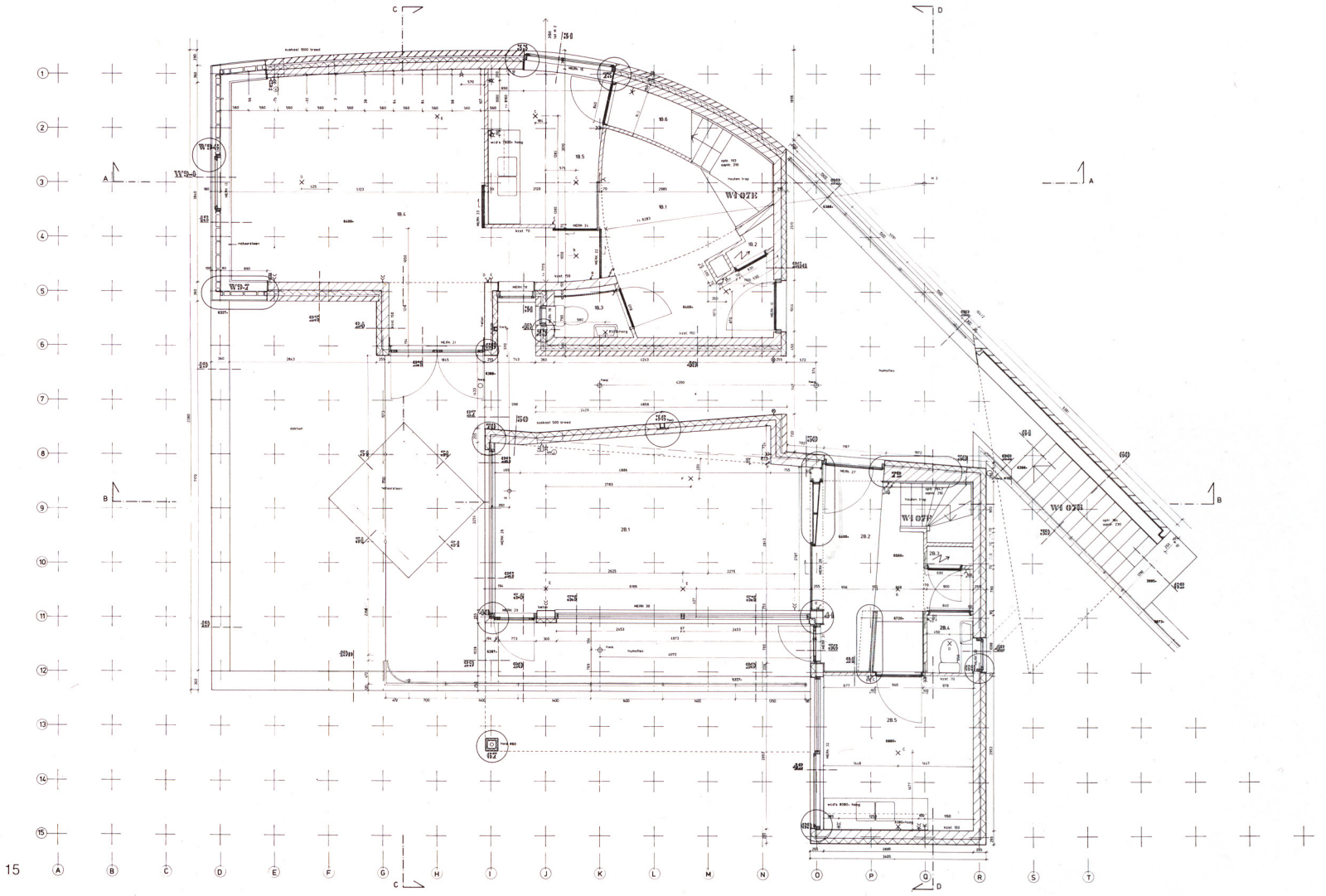
8



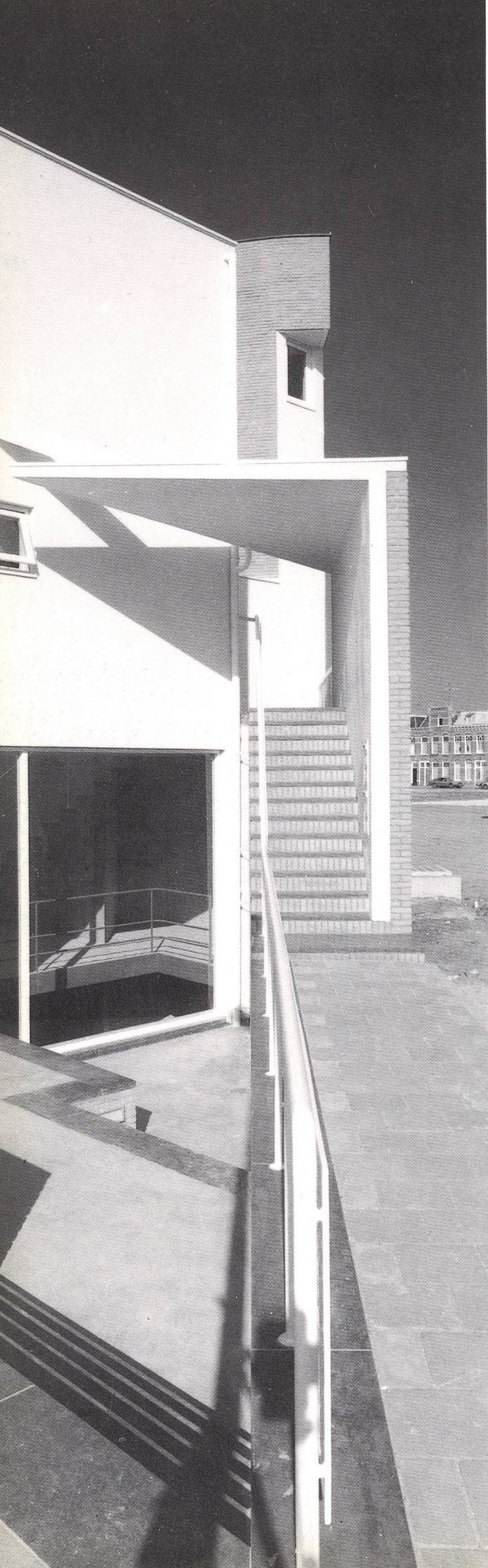




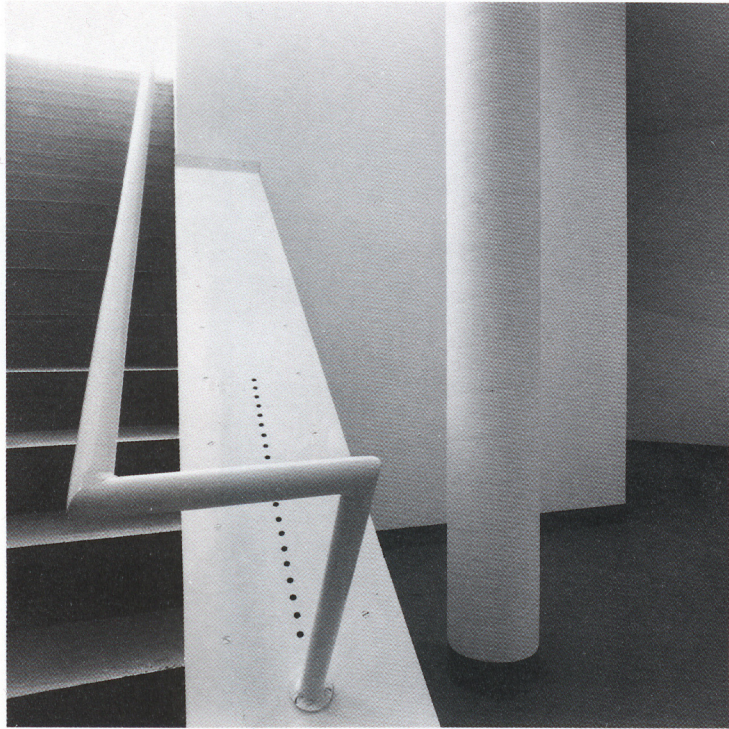
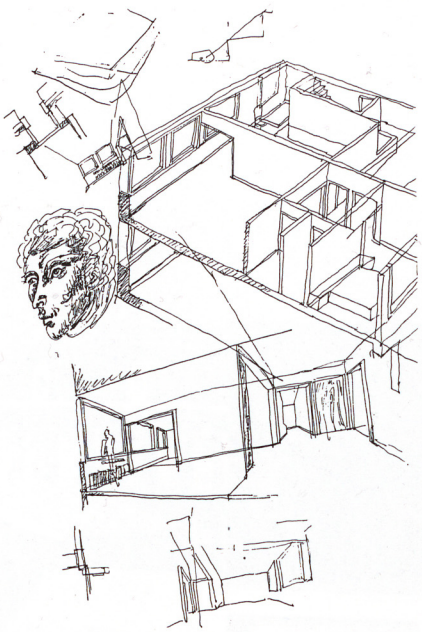




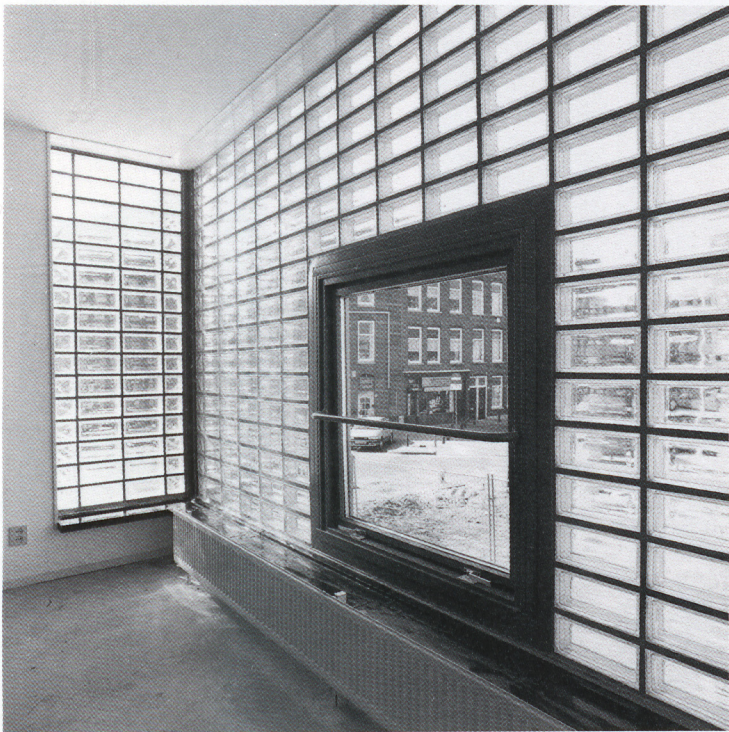
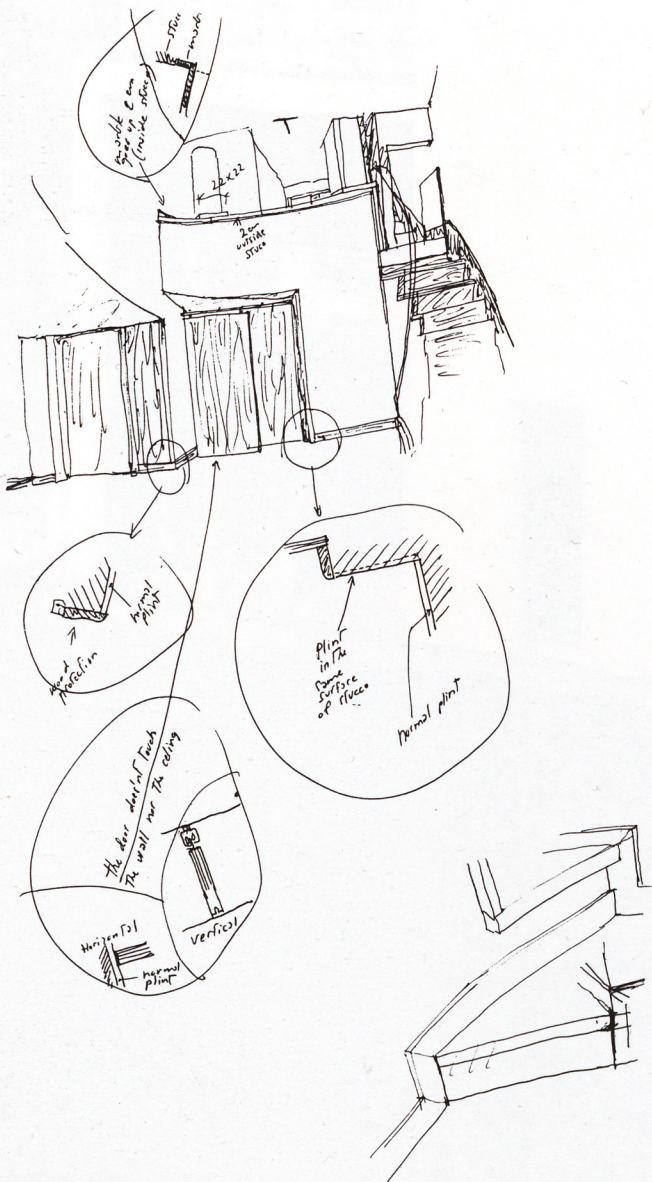
- 13. Sección AA.
- 14. Alzado Sudoeste.
- 15. Planta primera.



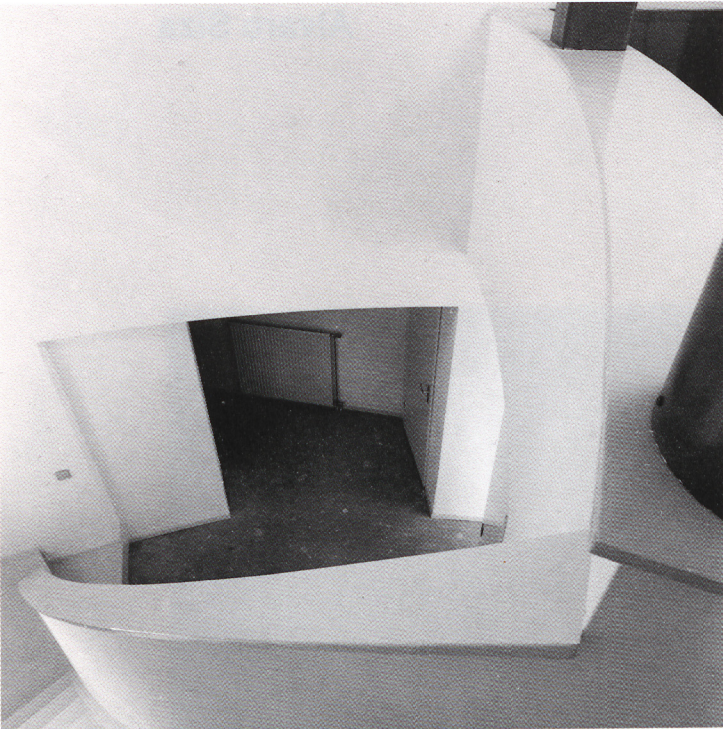




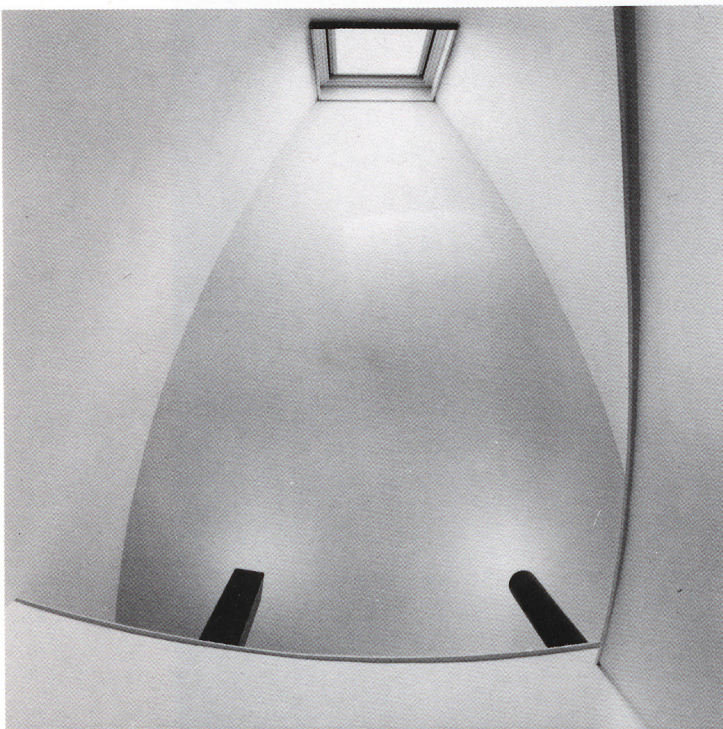
18



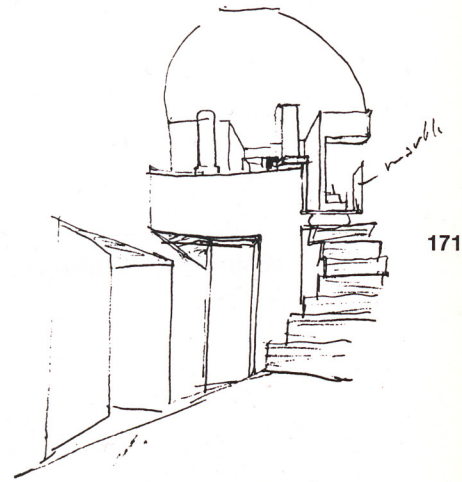
19



20



21



171

